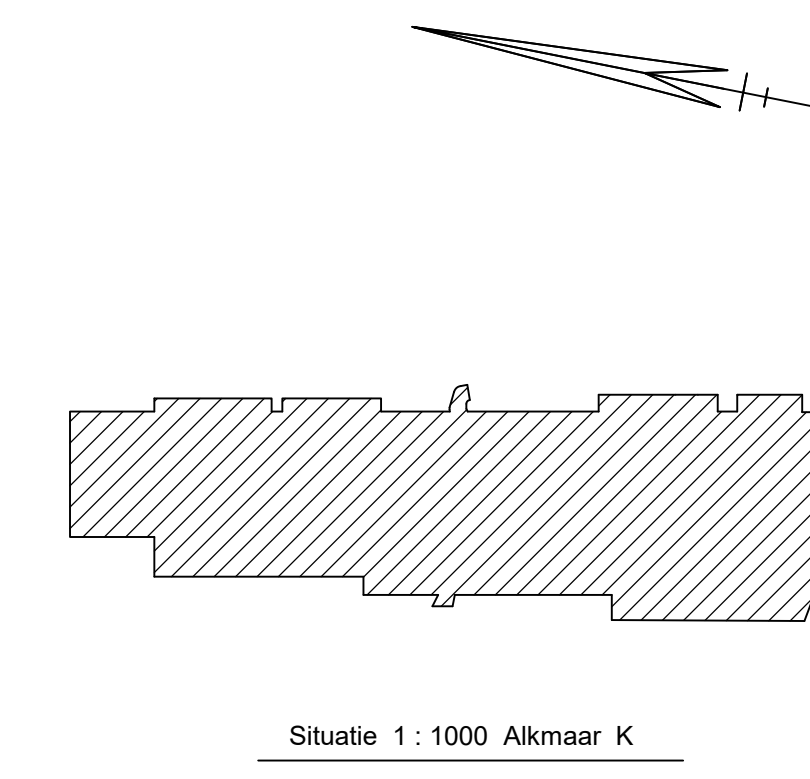
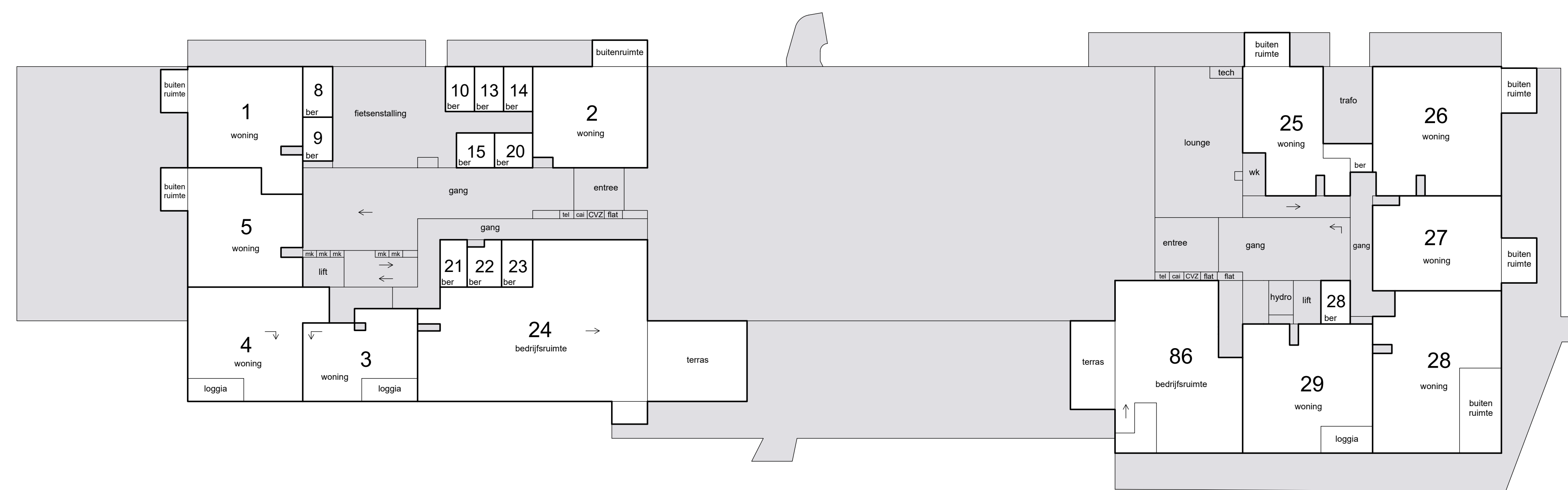


1e etage



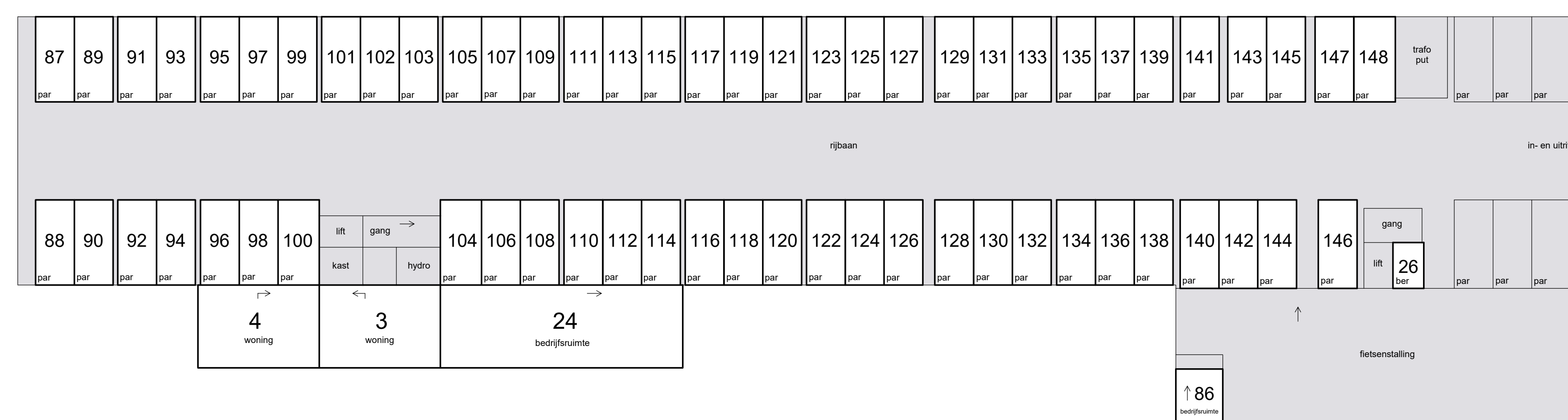
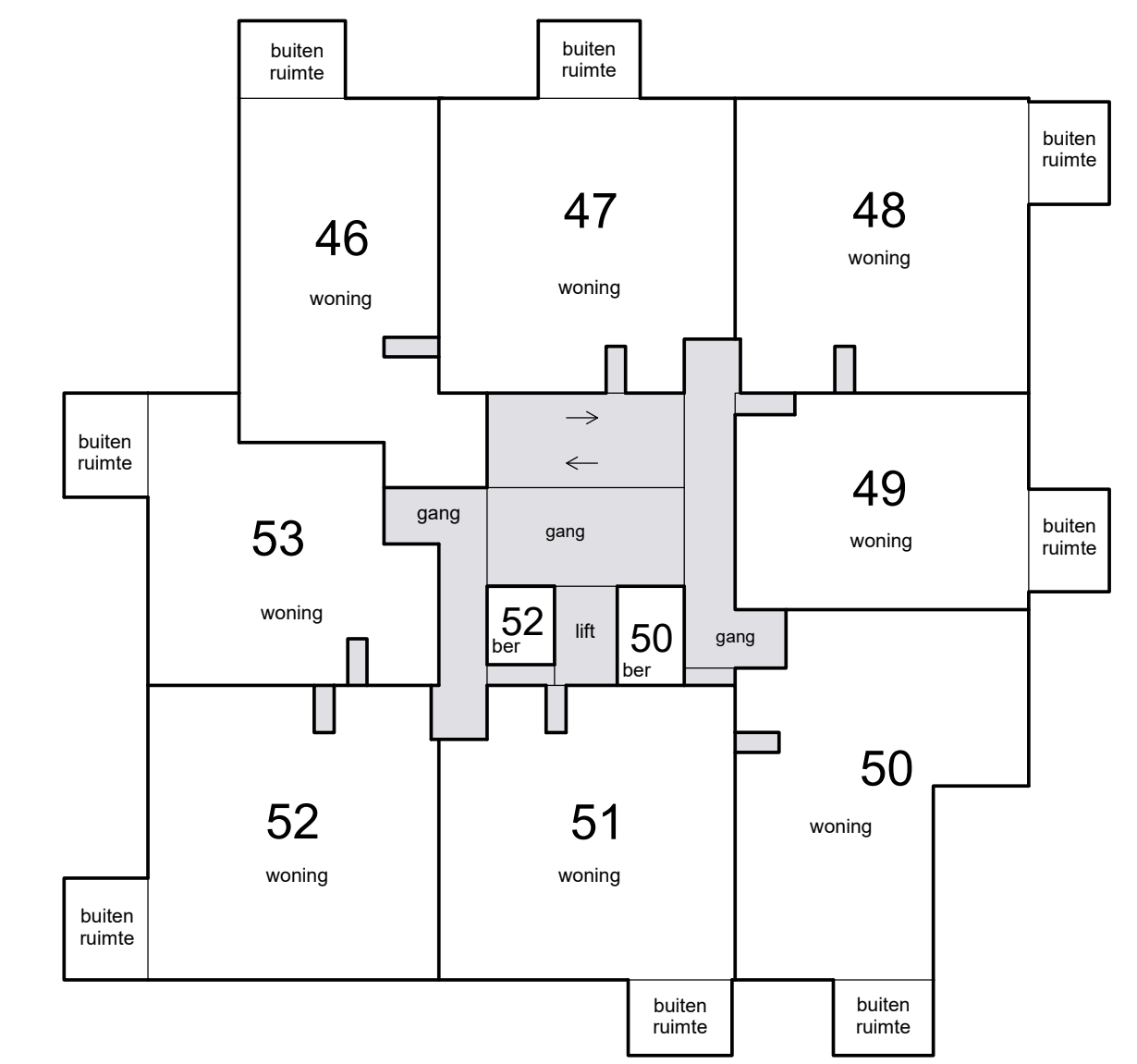
Schaal 1 : 200  
 = Gemeenschappelijk  
 Tekening bestaat uit 2 bladen  
 Blad 1



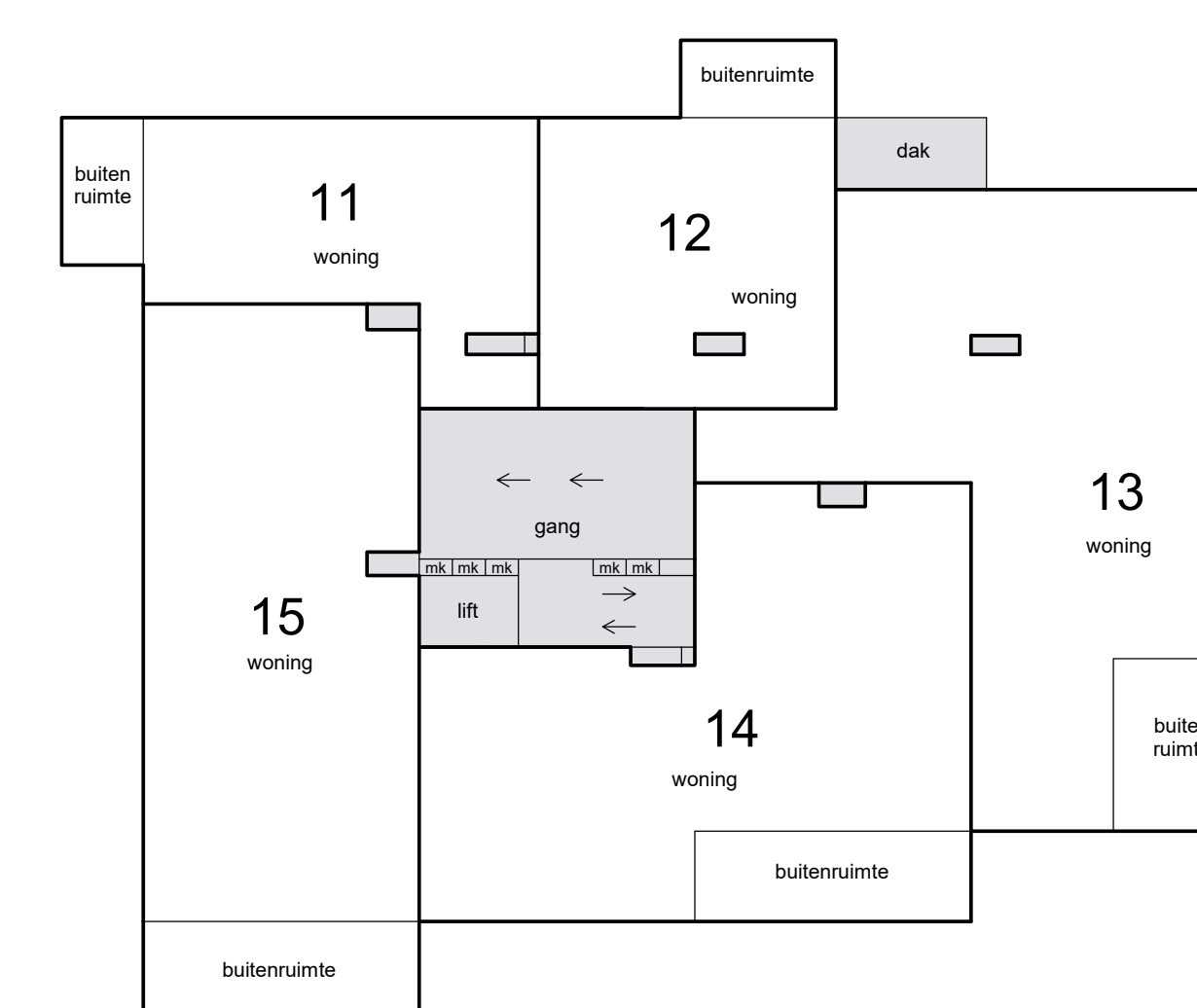
begane grond



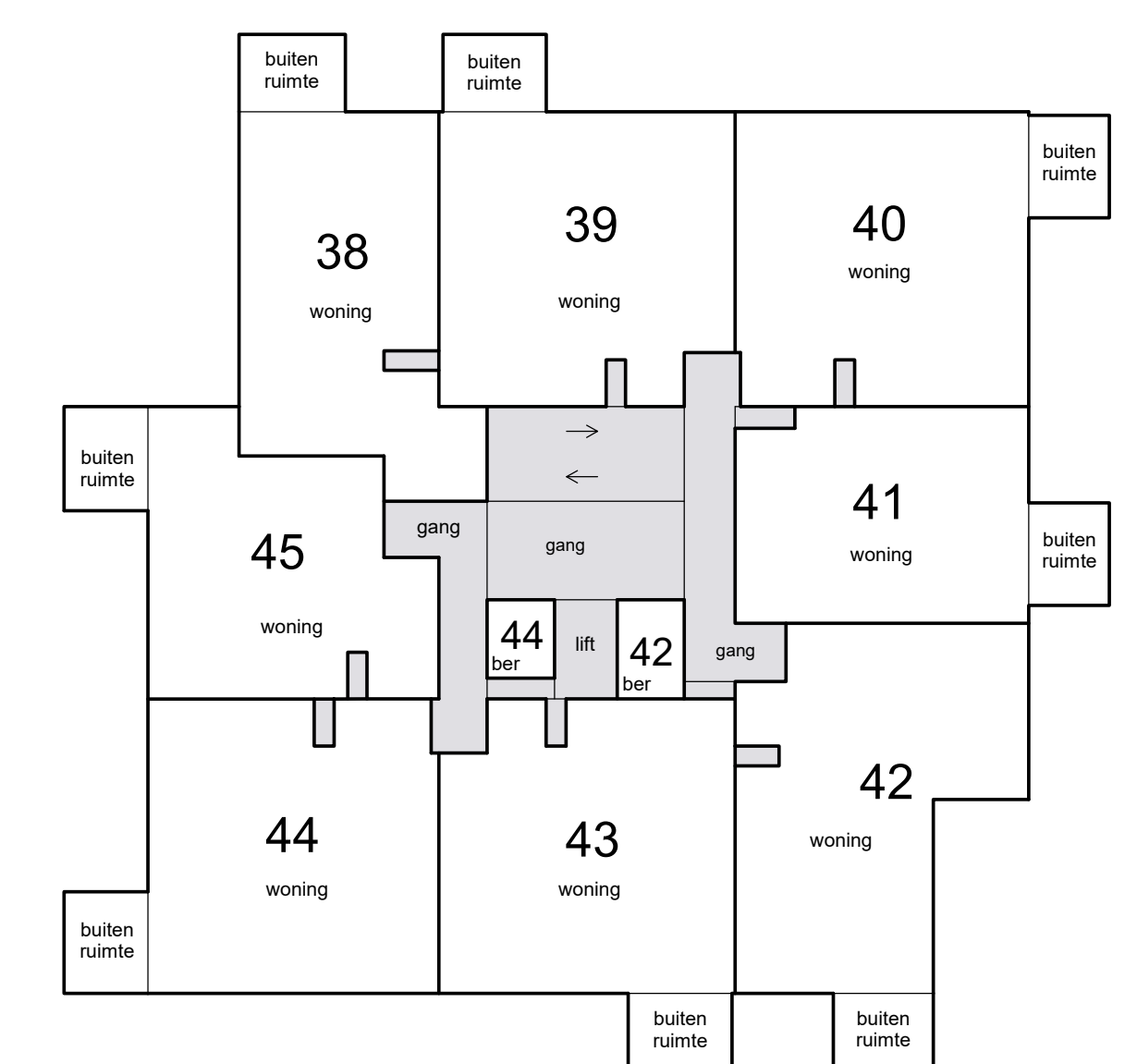
3e etage



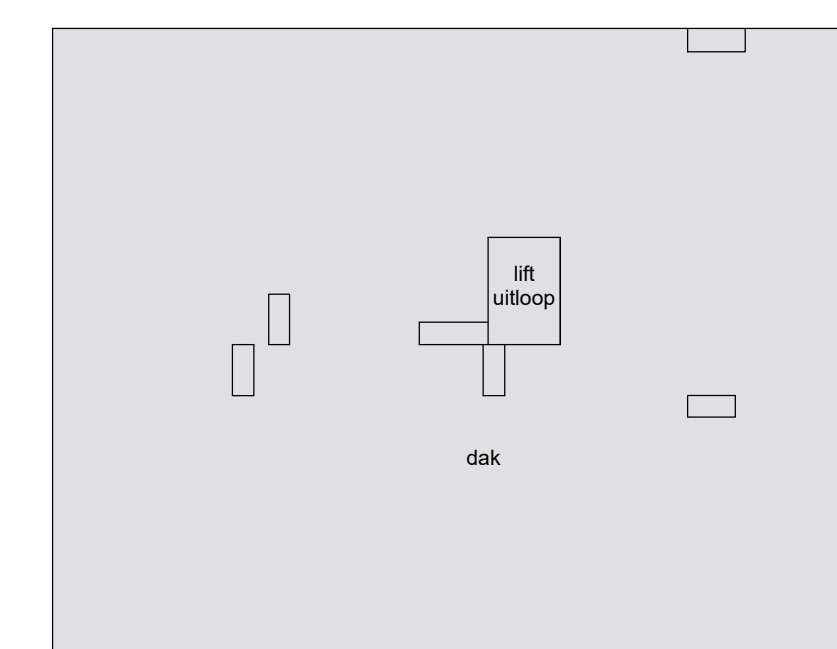
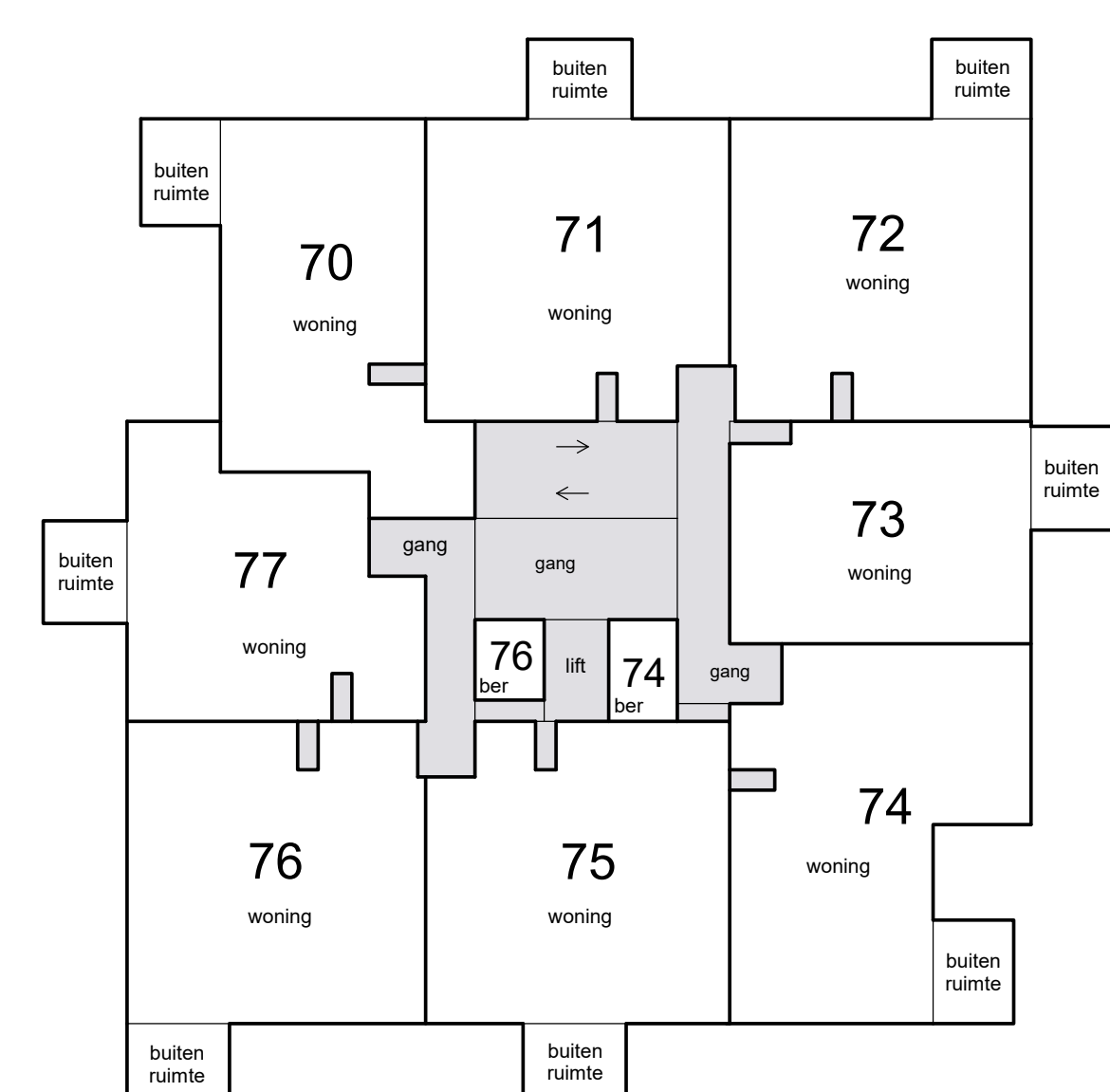
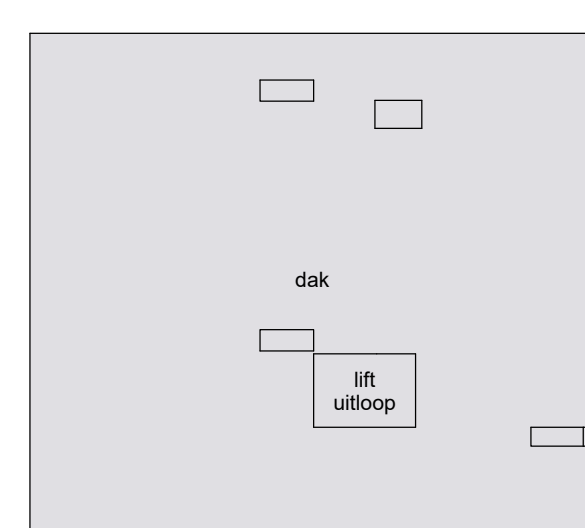
kelder



2e etage

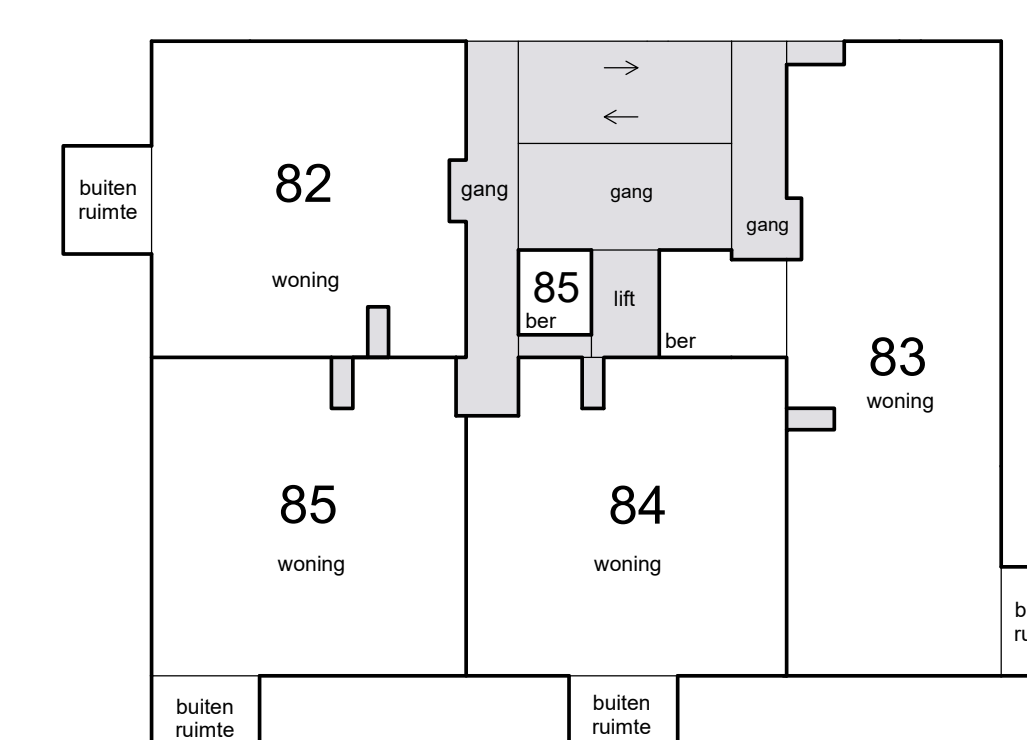
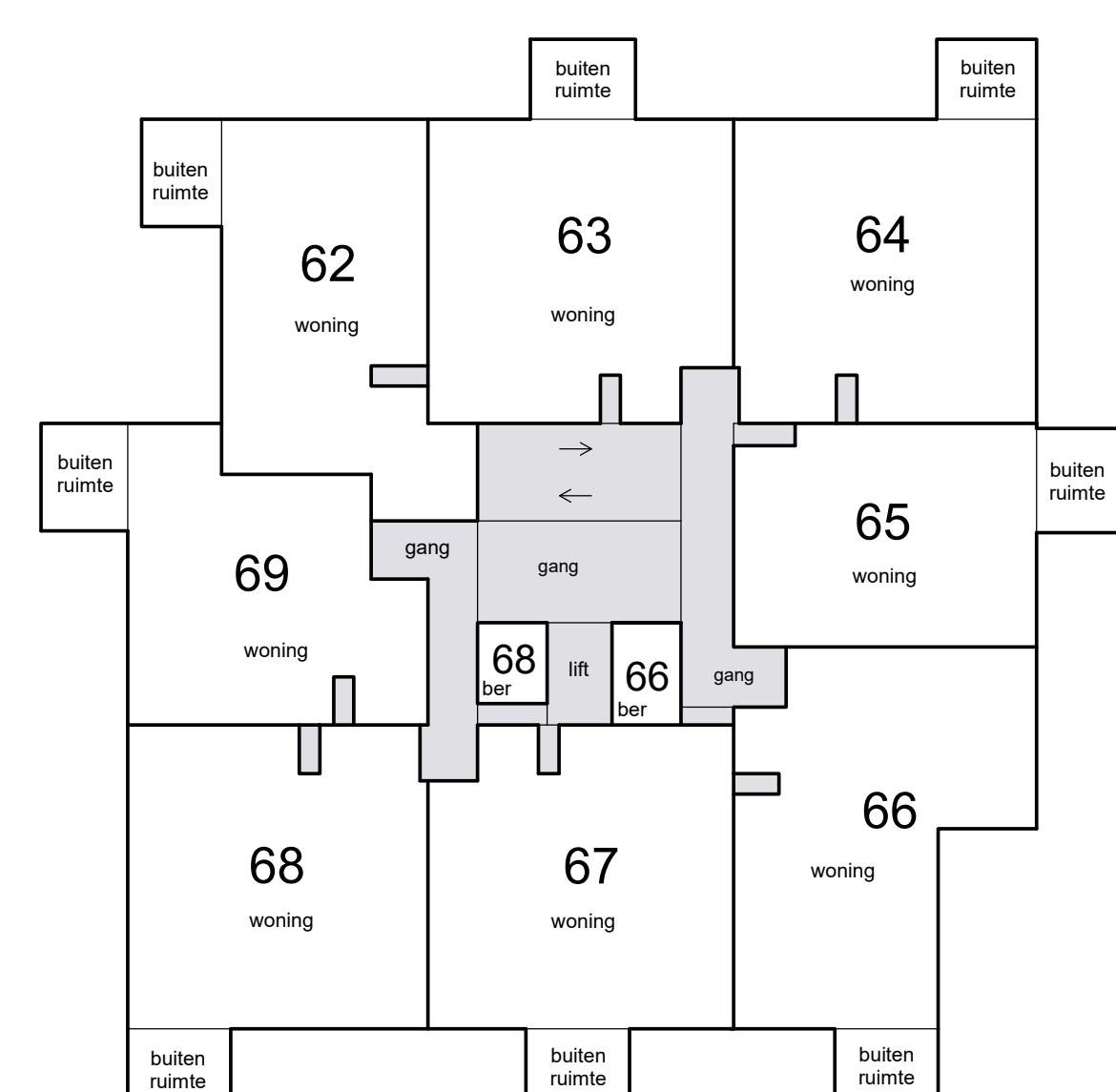
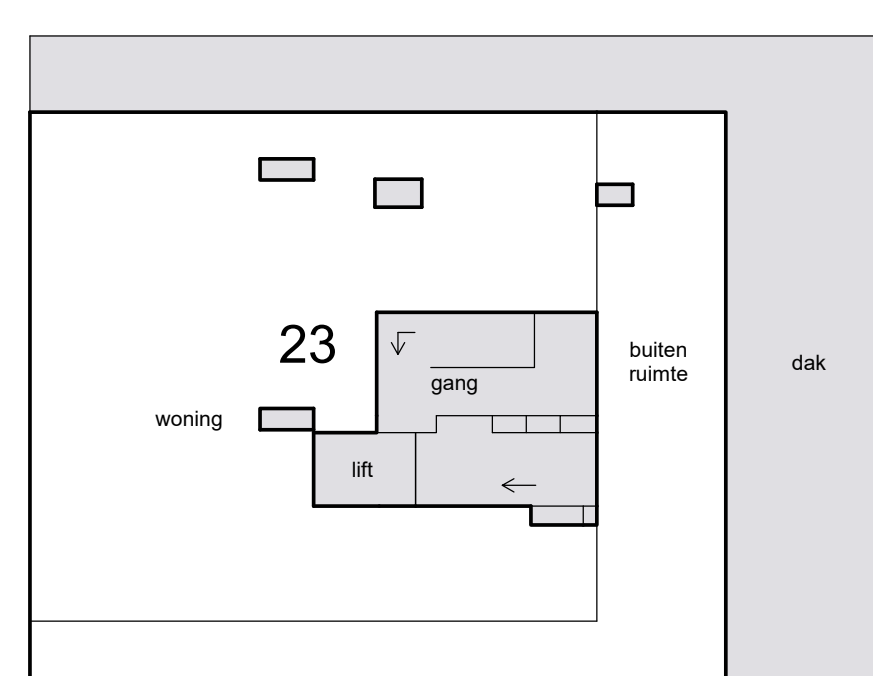


Schaal 1 : 200  
= Gemeenschappelijk  
Tekening bestaat uit 2 bladen  
Blad 2



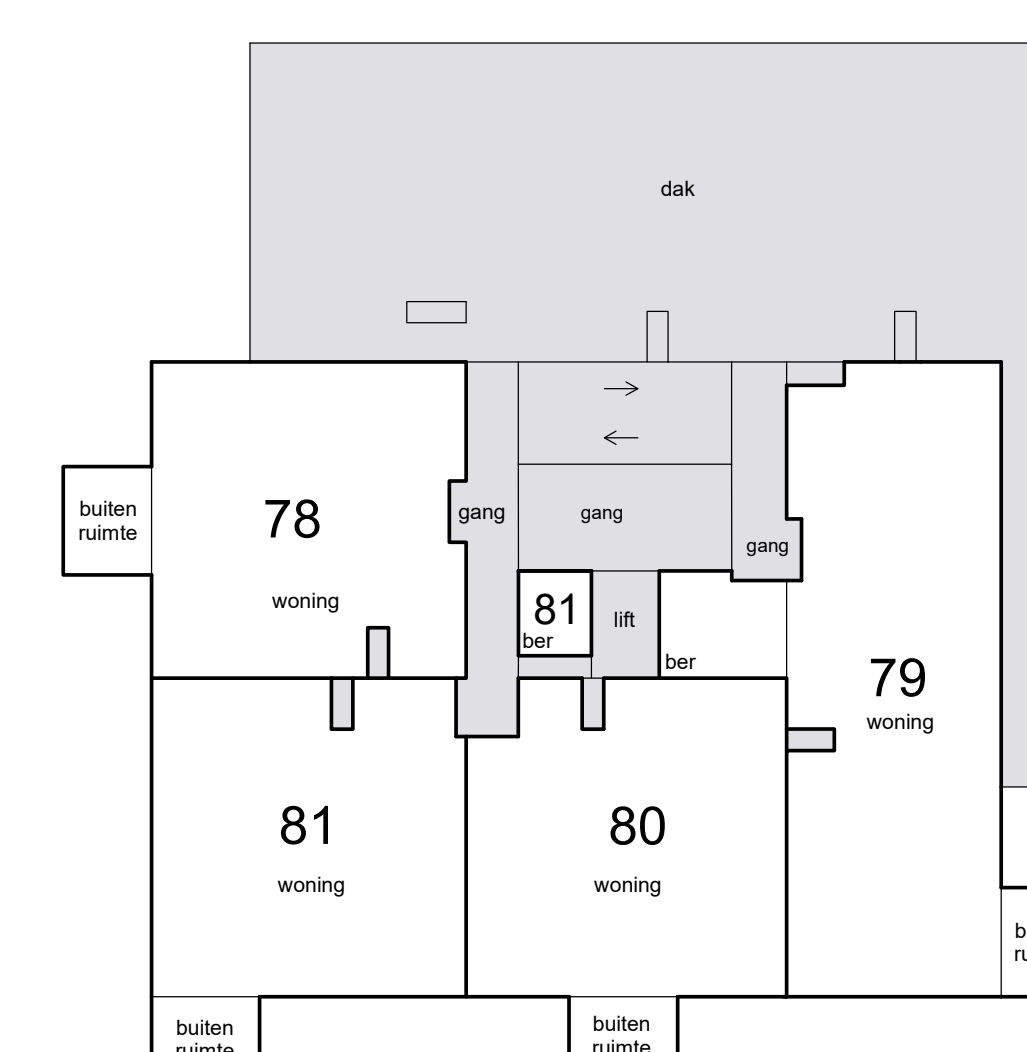
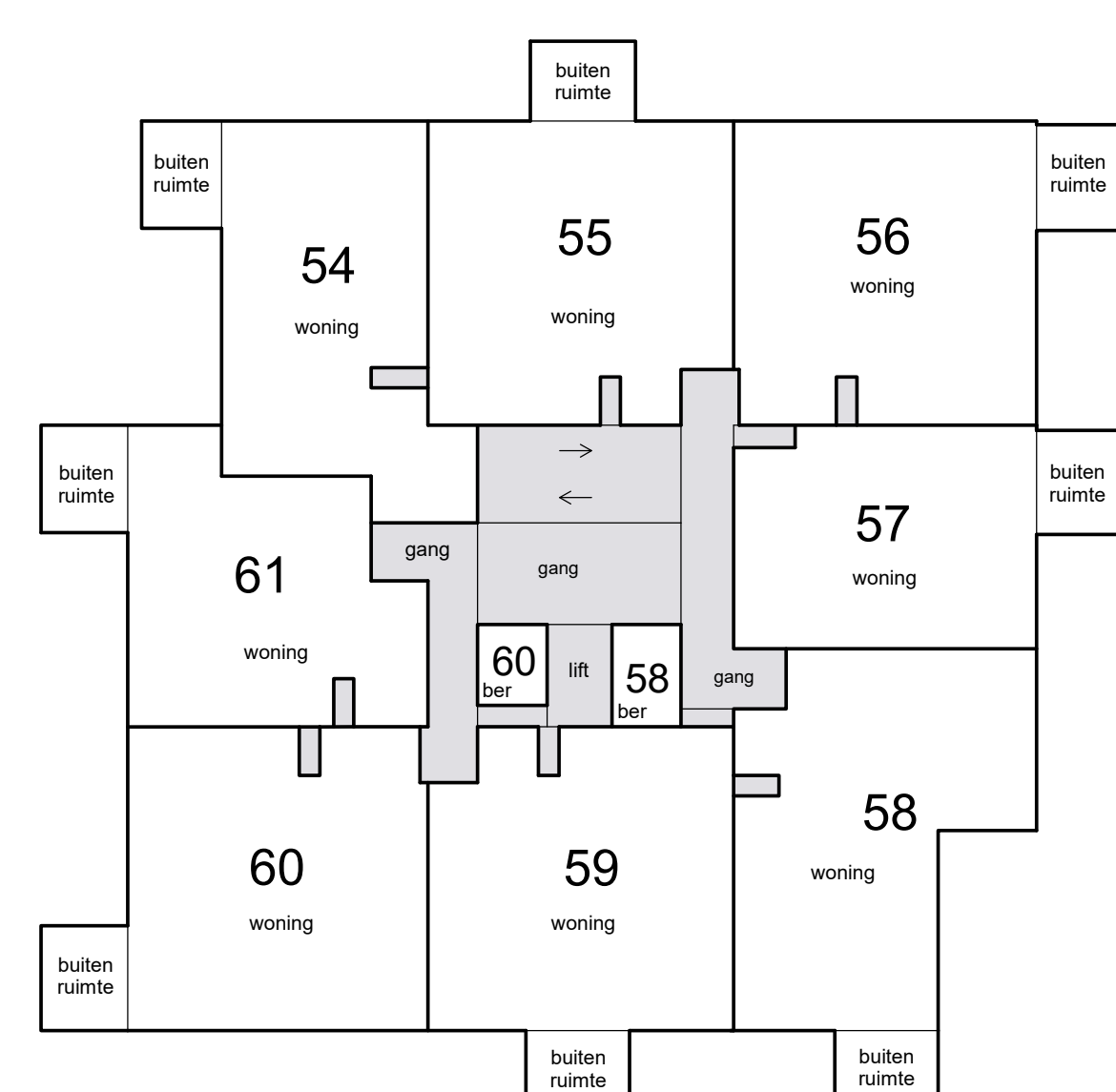
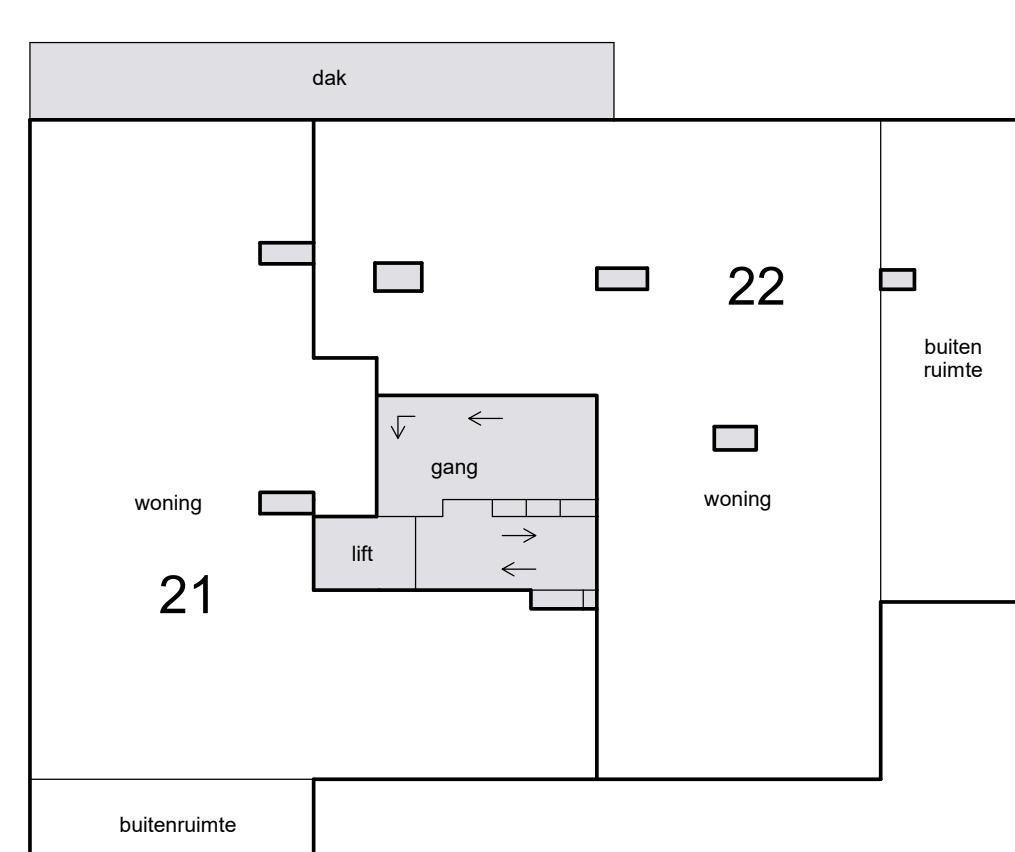
dak

6e etage



8e etage

5e etage



7e etage

4e etage

